



LUXOYA
makeup

A collection of Luxoya Makeup products including lipsticks, lip pencils, mascara, and brushes, arranged diagonally across the page. The products are primarily black with gold accents and some have red or pink packaging. The brand name 'LUXOYA' and 'makeup' are visible on several items.

LUXOYA *makeup*

WHY CHOOSE LUXOYA MAKEUP?

LUXURY EXPERIENCE IN EVERYDAY LIFE:

Our goal is to make everyone feel special without the high prices typically associated with luxury.

TREND FOLLOWING AND DURABILITY:

Our products are stylish and trendy, utilizing the most popular formulas to provide the best experience. We are also proud that a significant part of our products is vegan.


PROFESSIONAL SUPPORT:

We continuously provide our customers with helpful makeup advice, articles, and videos to empower everyone to use our products with confidence. We are always available through social media and our website to offer assistance.


With LUXOYA MAKEUP, luxury becomes accessible, and we want you to be a part of this experience!

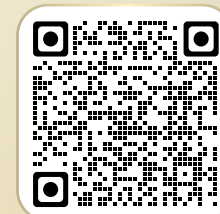
*Best regards,
The LUXOYA MAKEUP Team*

 www.luxoya.hu

 [Luxoya Beauty](#)

 [luxoya_beauty](#)

 [luxoya_beauty](#)



Join the
 **LUXOYA MAKEUP**
Facebook group!



Makeup by Veres Kinga

COLOR STAY

MATTE LIPSTICK

**JEWEL-LIKE, CREAM PIGMENTED,
LONG-LASTING MATTE LIPSTICK**

- Perfectly pigmented, creamy matte lipsticks with full coverage.
- Easy application with a long-lasting matte finish.
- The velvety formula ensures comfortable wear.
- A stylish addition to any handbag.
- Contains nourishing jojoba oil to counteract the drying effect often caused by matte lipsticks.

4,2 g

VEGAN



MAKEUP ADVICE

Create ombre lips in seconds! Contour your lips with the Lip Shape lip contour pencil, then blend softly inward to create the ombre transition. Next, fill in the inner empty area with a slightly lighter lipstick and blend using our Lip 01 brush.

COLOR LOCK

MATTE LIQUID LIPSTICK

KISS-PROOF, HIGHLY PIGMENTED, LIQUID MATTE LIPSTICK

A liquid lipstick that envelops your lips in ultra-intense, pigmented colors. Its special creamy formula helps even out the texture of your lips, providing a velvety smooth surface that lasts all day. You can rely on its long-lasting, kiss-proof properties for nearly the entire day.

- Precise application is aided by the unique drop-shaped applicator, allowing you to contour and apply color simultaneously.
- A more hydrating formula features hydrolyzed sodium hyaluronate, which has a smaller molecular weight, enabling better penetration into the skin and acting as a powerful moisturizer that attracts and retains moisture.

4,5 ml

VEGAN



MAKEUP ADVICE

Before using matte lipsticks, to prevent chapped lips, drink plenty of water and use lip balm. Make sure to remove the lip balm before applying lipstick for a guaranteed matte effect.

COLOR SHINE

MOISTURE LIPSTICK

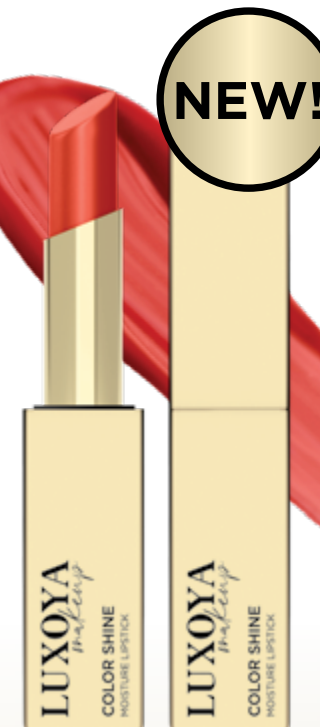
GLOSSY LIPSTICK WITH A BALMY TEXTURE

Rich, balmy texture, hydration, and reflective shine — with Luxoya Color Shine lipsticks, your lips can become not only radiant but also nourished and plump-looking. The perfect balance of shine, moisture, and color in just one swipe.

- The soft, balmy formula glides effortlessly on the lips while moisturizing them with shea butter and other nourishing ingredients.
- The buildable color intensity allows you to achieve a subtle look or a more striking appearance.
- Its glossy finish creates the optical illusion of fuller lips.
- Thanks to its compact, elegant packaging, you can refresh your look anytime, anywhere.

3,6 g

VEGAN



COLOR DIAMOND

GLITTER LIPSTICK

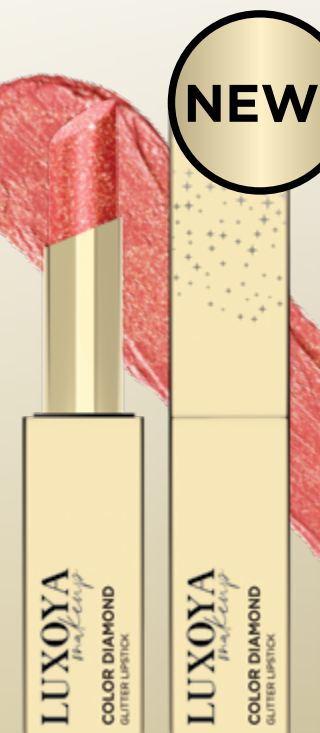
GLOSSY LIPSTICK WITH A GLITTERY FINISH

A liquid lipstick that envelops your lips in ultra-intense, pigmented colors. Its special creamy formula helps even out the texture of your lips, providing a velvety smooth surface that lasts all day. You can rely on its long-lasting, kiss-proof properties for nearly the entire day.

- Precise application is aided by the unique drop-shaped applicator, allowing you to contour and apply color simultaneously.
- A more hydrating formula features hydrolyzed sodium hyaluronate, which has a smaller molecular weight, enabling better penetration into the skin and acting as a powerful moisturizer that attracts and retains moisture.

3,6 g

VEGAN



COLOR GLAZE

LIPGLOSS

Luxoya Color Glaze lip glosses represent a new level of everyday lip care and sparkling, glossy appearance.

- The lightweight, non-sticky formula melts almost invisibly into the lips, filling in fine lines while providing comfort and an optically fuller look.
- Enriched with nourishing oils and ingredients, these lip glosses hydrate the lips and protect against dryness. The range includes translucent glittery, pearlescent, and iridescent shades, so everyone can find the perfect match for their style — whether it's everyday shine or evening sparkle.
- The precise applicator ensures even and accurate application, while the stylish, compact packaging allows you to take the lip gloss anywhere.

4,5 ml

VEGAN



MAKEUP ADVICE

If you want a longer-lasting color, use the Lip Shape lip liner that matches your chosen shade and gently blend it over your lips.

LIP SHAPE

LIP PENCIL

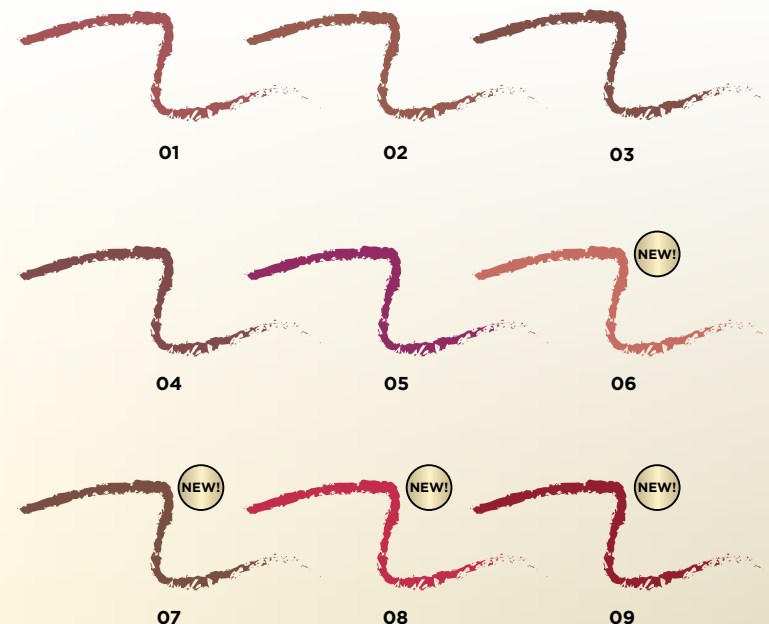
PIGMENTED LIP LINER WITH A SOFT, CREAMY FORMULA

The perfect blend of classic and modern lip liners. This lip pencil is designed to define and enhance your lips precisely and effortlessly, providing a flawless base for your favorite lipstick or gloss.

- Made with a smooth, creamy formula that offers rich, long-lasting color in a perfect combination.
- Multifunctional, it can be used for lip contouring, highlighting, or even filling.

1,2 g

VEGAN



MAKEUP ADVICE

Apply a bit of highlighter to the upper and lower edges of your lips. The highlighter will enhance the natural outline of your lips. Next, contour your lips with the Lip Shape lip liner pencil, following the curve for a fuller effect.



Makeup by Veres Kinga

SILK TOUCH

FOUNDATION

NEW!

BUILDABLE FOUNDATION WITH SATIN FINISH AND MEDIUM TO FULL COVERAGE

Discover Luxoya's newest liquid foundation, the perfect choice for any occasion with its satin finish! This lightweight, airy formula blends seamlessly with your skin, providing a natural glow without looking too matte or too shiny — striking the perfect balance.

The foundation adapts flexibly to all skin types, doesn't settle into fine lines, avoids emphasizing dry patches, and offers comfortable wear all day long. Thanks to its buildable coverage, it's ideal for a subtle everyday look but also works perfectly for a more dramatic, special occasion makeup.

The product is available in a total of **9 shades**, divided into two tone groups:

- **5 shades in the Neutral family**, for those who prefer neutral, natural tones
- **4 shades in the Warm family**, ideal for warmer skin tones

- Skin-adaptive, natural effect
- Buildable coverage
- Lightweight, airy texture that blends almost like a second skin
- Satin finish: softly luminous without a greasy feel
- Perfect for everyday wear and special occasions

This foundation isn't just a new product — it's a reliable companion that brings out the best in you, wherever you go. Choose the shade that suits you best and enjoy a flawless, fresh, and radiant look — from morning till night.



30 ml

VEGAN

NEUTRAL

N01



N04



N02



N05

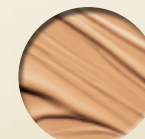


N03



WARM

W01



W04



W02



W03



MAKEUP ADVICE

The foundation looks best when it blends almost invisibly into your skin's color and texture. For the summer, it's important to test it not on the back of your hand or wrist, but along your jawline — this way you can see how it matches your neck tone and avoid a mask-like effect. If you're undecided between two shades, choose the lighter one — it's easier to warm up with a bronzer than to lighten a darker shade.

BRIGHT FOCUS

CORRECTOR

NATURAL-LOOKING, CREAMY LIQUID CONCEALER

Discover the concealer that masterfully balances a natural look with reliable coverage. Its lightweight, creamy texture almost melts into the skin, working invisibly for a flawless appearance — whether it's dark circles, redness, or minor imperfections.

The formula is designed to avoid settling into fine lines, prevent dryness around the eyes, and remain flexible even with movement.

- Creamy, soft texture that blends easily
- Natural finish with dependable coverage
- Doesn't dry out or settle into wrinkles
- Buildable: from minimal correction to full coverage
- Perfect for both the under-eye area and facial skin

This concealer doesn't just conceal — it enhances, helping to maintain your skin's fresh, healthy glow while working discreetly in the background.



7,5 ml

VEGAN



01

02

03

04

MAKEUP ADVICE

The key to natural yet effective correction is the “less is more” principle — especially around the eye area. Start with a tiny amount near the inner corner of your eye, then gently tap it outward with your fingertip or a damp sponge. This not only creates a natural gradient but also helps prevent buildup in fine lines. If you want more coverage, layer thinly rather than applying a lot at once — your concealer's buildable texture is designed exactly for this.

SATIN SET

SETTING POWDER

NATURAL, MATTE-EFFECT TRANSPARENT SETTING POWDER

- Colorless setting powder for smooth, satin-like skin.
- Its natural matte effect provides a fresh appearance and ensures your makeup stays flawless all day long.
- Creamy, liquid-based products should always be set with powder to prevent smudging and to increase longevity.
- Thanks to its transparent shade, it does not alter the foundation's color.
- Perfectly sets makeup, guaranteeing a long-lasting fresh look.
- Reduces the visibility of skin imperfections and provides a natural satin-matte finish.



12 g

LUXOYA
makeup

GLAM CHEEKS

BLUSH POWDER

NATURAL, FRESH LOOK, SILKY BLUSH POWDER

- Achieve a naturally vibrant, fresh, and youthful appearance instantly with our blush powder.
- A silky textured blush that effortlessly blends into the skin, providing layerable coverage.
- Thanks to a special pressing technology, the product can be easily and evenly layered, allowing for both natural and more pronounced effects.

7,5 g-9 g

VEGAN



01

02

03

04



MAKEUP ADVICE

Apply the blush towards the bronzer on your cheeks. Maintain a vertical distance of two fingers from your nostrils and a horizontal distance of two fingers below your eyes. For application, we recommend using the Blush 01 and Multi-Powder 01 brushes.

LUXOYA
makeup

BRONZE DEFINE

BRONZING POWDER

POWDER FOR A SUN-KISSED OR CONTOURED EFFECT

- Finely milled bronzing powder that glides smoothly over the skin, providing a natural, radiant finish that effortlessly enhances your complexion.
- Perfect for contouring or achieving an all-over sun-kissed look.
- Thanks to a special pressing technique, the product is easy to build and layer evenly. You can create both natural and more defined effects.
- With our more neutral shades, it's a great tool for the popular "bone-structure" trend, helping to sculpt the face for a slimmer, more defined appearance.

7,5 g-9 g

VEGAN



MAKEUP ADVICE

When applying, follow the shape of the number 3. Start bronzing under the cheekbones, making sure it's darker and more shadowed towards the hairline. Then continue towards the forehead, following the hairline. Use the minimal remaining product to contour and shade the bone of your chin. For application, we recommend these brushes: Blush 01, Multi-Powder 01.

DIAMOND GLOW

HIGHLIGHTER

DIAMOND-SHINE PRESSED HIGHLIGHTER

Silky-textured pressed highlighter with a diamond-like glow — for a trendy, wet-look radiance.

- The Diamond Glow Highlighter delivers a shimmering, high-impact glow that melts into the skin, creating a dewy, "wet look" effect. This luminous finish is one of the hottest current makeup trends — giving the skin a natural radiance, as if lit from within.
- The pearlescent golden shimmer catches the light beautifully, adding a luxurious glow when applied to the high points of the face.
- Flattering on all skin tones, this universal, sunlit highlighter instantly brightens the complexion and elevates your entire look.

7 g

MAKEUP ADVICE

Apply to the cheekbones, brow bones, tip of the nose, and Cupid's bow for a dewy glow that enhances your features without going over the top. It can also be used on the eyelids or inner corners of the eyes for a bright, refreshed look. For an even more intense, glass-like shine, apply with your fingertips.



SILK GLOW

HIGHLIGHTER POWDER

SILKY LUMINOUS, BUILDABLE HIGHLIGHTER POWDER

- Ultra-fine textured formula achieved through baked technology.
- Its glow is silky and pearl-like — it highlights without emphasizing skin texture or imperfections.
- Perfect for enhancing the high points of the face with an intense, luminous finish.
- Thanks to its high pigmentation, it builds easily and evenly, allowing for both natural and dramatic looks.
- Highlighters work best on the areas of the face where light naturally hits. The most popular spots include one finger below the eyes (just above the blush), extending outward toward the temples, beneath the brows on the brow bone, on the tip of the nose, and on the Cupid's bow.

10,5 g

MAKEUP ADVICE

For a fresh, subtle look, start with the Prime Shadow eyeshadow base, set it with the Satin Set setting powder, then apply any shade of the Silk Glow highlighter as eyeshadow across the entire eyelid — or simply use it to highlight the inner corners of the eyes.



LUXOYA MAKEUP • REGÁN LILI LIMITED COLLECTION

LUXOYA makeup x Regán Lili

EYESHADOW PALETTE - REGÁN LILI

A 9-shade eyeshadow palette reflecting Lili Regán's personality, featuring a mix of matte and shimmering tones (5 mattes, 4 shimmers) inspired by the vibrant energy and nightlife of club culture.

Housed in a compact case with a built-in mirror, this palette offers blendable, highly pigmented formulas with an extra touch of sparkle — perfect for both daytime and evening looks.

9x1,3 g



DEFINE&DAZZLE MASCARA - REGÁN LILI

Dual-ended mascara with double effect:

One side features the classic, deep black bestseller formula for voluminous and defined lashes, while the other side adds a glittery layer for a sparkling look.

From subtle shimmer to bold sparkle — you decide how much you want to shine.

2x5 ml



COLOR LOCK MATTE LIQUID LIPSTICK - REGÁN LILI 01 02

The well-known, kiss-proof Color Lock lipstick is now available in Lili Regán's favorite shades!

The same highly pigmented, matte-finish formula that lasts long while remaining comfortable to wear — enriched with moisturizing ingredients for soft, vibrant lips.

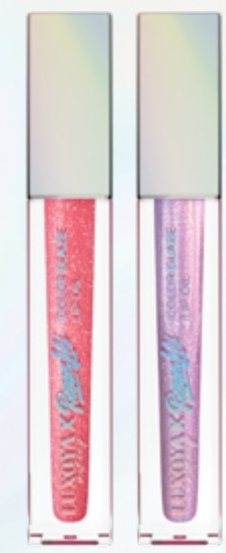
A reliable choice when you want lasting color and style.

4,5 ml



01

02



01

02

COLOR GLAZE LIP OIL - REGÁN LILI 01 02

Combines nourishing lip care with glass-like shine for an ultra-feminine look.

Lightweight, non-sticky formula — perfect on its own or layered over lipstick.

4,5 ml

DIAMOND GLOW HIGHLIGHTER - REGÁN LILI

A silver, dewy highlighter with sparkling shimmer that can be applied anywhere on the face (cheekbones, eyelids, collarbones, décolleté) to create an extraordinary, radiant glow.

8 g



LUXOYA X REGÁN LILI - EYELINER - BLACK

Ultra-fine felt-tip eyeliner designed for precise lines and artistic patterns with ease.

Features deep black, intense pigmentation.

Dries quickly, waterproof, and smudge-proof — comfortable to use for both beginners and professionals.

0,5 ml



LUXOYA MAKEUP • REGÁN LILI LIMITED COLLECTION



Makeup by Veres Kinga

EYESHADOW PALETTES

EYESHADOW PALETTES

- The Luxoya eyeshadow palettes offer intense, long-lasting coverage along with easy application and blending.
- Our refined, trendy shades meet a wide range of needs.
- Each palette contains a total of 5 colors: 3 matte shades and 2 high-shine, duochrome, or multi-chrome shimmering shades.
- The formula of the matte shades is creamy, highly pigmented, and blends seamlessly. The shimmering shades allow you to create magical looks that transport you to a new world with just a touch.
- With these palettes, you can create everyday looks, but they are also perfect for more creative, occasion-based makeup, where only your imagination sets the limits.
- The compact palette is ideal for travel, thanks to its small size and built-in mirror, making it easy to take anywhere.
- The names of the shades also reflect their functions, making it easier for users who may be new to products and techniques to make their selections.

VEGAN

MAKEUP ADVICE

For long-lasting and intense results, use the Prime Base Eyeshadow Primer. When creating your eye makeup, let your imagination run wild, but for a classic eye look, follow this order:

- 1. PRIME:** Apply to the inner corner of the eye using the Packer 01 brush to open up and brighten your eye look.
- 2. ENHANCE:** Apply above the crease line with the Blending 01 brush to further open the eye.
- 3. SMOKE:** Apply below the crease line with the Smudger 01 brush to add depth to the look.
- 4. MAGIC TOP/HOLO TOP:** Placement is only limited by your imagination. Use the Packer 01 brush, and for extreme sparkle, use your fingertip. You can apply it to the entire eyelid, just the center, or along the lower lash line.
- 5. SHIMMER GLOW:** Similar to Magic Top, placement is limited only by your creativity. Use the Packer 01 brush, and for extreme sparkle, use your fingertip. You can apply it to the entire eyelid, just the center, or along the lower lash line.



NUDE

EYESHADOW PALETTE

Overall, the palette features a warm and natural color scheme based on earth tones, making it perfect for both day and evening makeup. It includes both matte and shimmering shades, allowing for a range of variations from subtle, understated looks to more dramatic, radiant effects. The earth tones convey timeless elegance and complement every skin tone beautifully.

The lighter shades, like Prime with their clean beige tones, are ideal for starting a subtle, basic makeup look, while the bolder colors, such as Enhance and Smoke, with their warm browns and deep cocoa hues, create a more pronounced and dramatic effect. These deeper shades work particularly well for highlighting or shading the eyes.



Day Makeup with the
LUXOYA MAKEUP NUDE Palette
Makeup by Veres Kinga



The shimmering, radiant colors like Magic Top and Shimmer Glow provide a wet effect and metallic finish that add warmth and extra dimension to your makeup. These shades are perfect for accentuating the eyes or creating highlights.



Evening Makeup with the
LUXOYA MAKEUP NUDE Palette
Makeup by Veres Kinga

ROMANCE

EYESHADOW PALETTE

The Romance palette is an excellent choice for lovers of a romantic look, combining the depth of mauve and burgundy shades with shimmering, glittery lilac-pink tones. Suitable for both day and evening makeup, it provides a passionate and sophisticated appearance for any age.

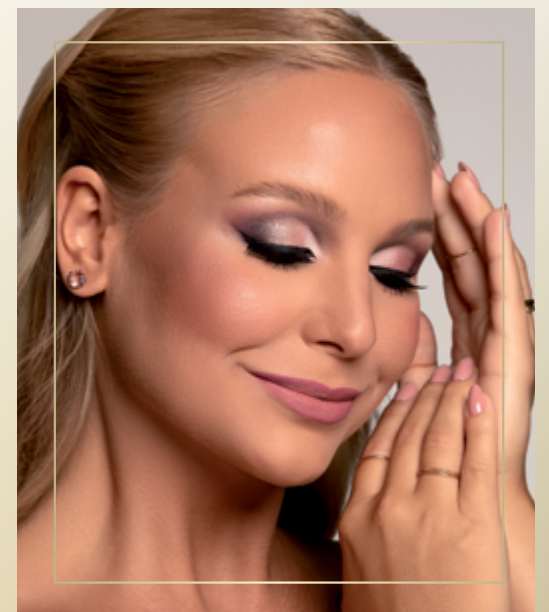
The lighter shades, like Prime with their soft pink tones, are ideal for starting a subtle, basic makeup look, while the bolder colors, such as Enhance and Smoke with their mauve and burgundy hues, add emphasis and drama. These deeper shades work particularly well for highlighting or shading the eyes.



Day Makeup with the
LUXOYA MAKEUP ROMANCE Palette
Makeup by Kiki Dorisz



The more sparkling, radiant colors like Magic Top and Shimmer Glow offer a wet look in lilac-blue and glowing rose-gold metallic shades, adding boldness and extra dimension to your makeup. These shades are perfect for accentuating the eyes or creating highlights.



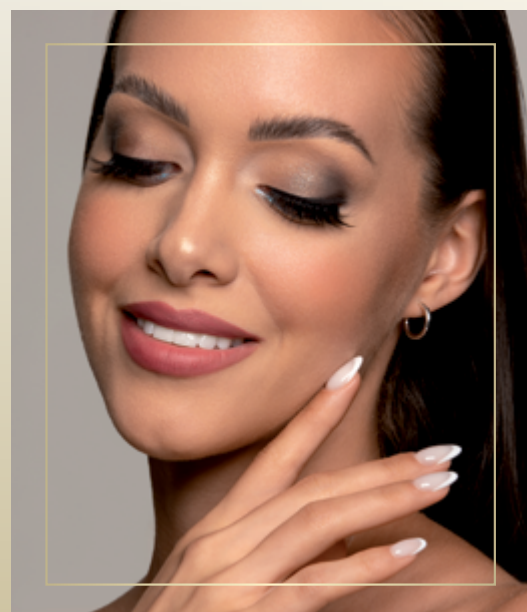
Evening Makeup with the
LUXOYA MAKEUP ROMANCE Palette
Makeup by Kiki Dorisz

SMOKE

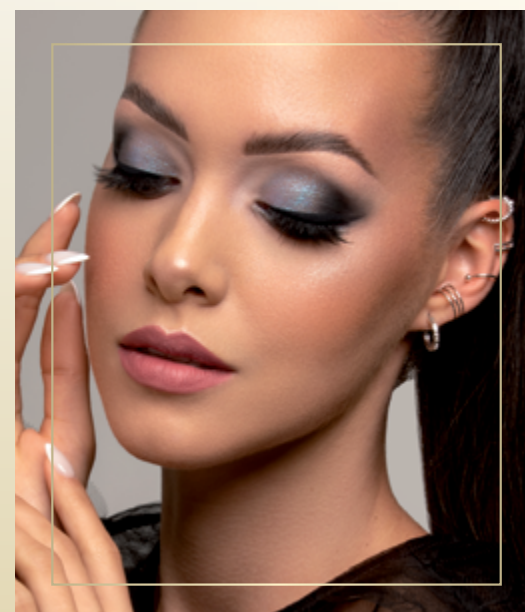
EYESHADOW PALETTE

The Luxoya eyeshadow palette in this version offers dramatic, cooler tones perfect for deep, smoky looks. It features classic smoky shades alongside uniquely shimmering, radiant hues that create an eye-catching appearance.

The lighter shades in the palette, such as Prime with its clean, white tone, are ideal for starting a subtle, basic makeup look. In contrast, the bolder colors like Enhance and Smoke, with their cool grays and intense blacks, add emphasis and drama. These deeper shades work especially well for highlighting or shading the eyes.



Day Makeup with the
LUXOYA MAKEUP SMOKE Palette
Makeup by Cséka-Ferenczi Denise



Evening Makeup with the
LUXOYA MAKEUP SMOKE Palette
Makeup by Cséka-Ferenczi Denise

VEGAN



5x1,3 g

The shimmering, radiant colors like Magic Top and Shimmer Glow provide a lilac-blue wet effect and blue-gray metallic shades that add boldness and extra dimension to your makeup. These shades are perfect for highlighting the eyes or creating focal points.

PASSION

EYESHADOW PALETTE

Discover the colors of passion!

The Luxoya Passion eyeshadow palette celebrates the intensity of emotion and bold beauty with its exciting pink and purple tones. Whether you're feeling seductive, playful, or elegant — this palette is your key to confident self-expression.

Its vibrant shades evoke spring blooms, the rich hues of berry fruits, and the freshness of new romance. The matte tones add depth and character to the eyes, while the shimmering, dewy-finish shades bring dazzling light and dimension.

The shade Prime is a vivid pink base, perfectly complemented by Enhance — a warm coral pink



DESERT

EYESHADOW PALETTE

The Luxoya Desert Eyeshadow Palette is inspired by the warm tones of nature, perfectly blending subtle elegance with playful shimmer.

Luxoya Makeup brings you desert-inspired shades — ideal for both everyday wear and special occasions.

The palette's color story draws from sun-kissed sands, golden light, and the deep shadows of desert landscapes. Carefully selected matte and shimmer shades allow for both natural, sophisticated looks and bold, dramatic evening makeup.

The Prime shade, a light beige tone, is ideal for creating a smooth base. Enhance and Smoke add



VEGAN



5x1,3 g

ideal for defining the crease. Smoke is a deep mauve shade, perfect for creating an intense smoky effect, while the familiar Shimmer Glow delivers a rosy-peach sparkle to brighten the eyelids. For the most eye-catching shine, finish your look with the new Holo Top shade — a creamy topper formula that adds an icy, bluish holographic glow.

VEGAN



5x1,3 g

warmth and depth with their rich orange and bronze hues.

For maximum impact, Shimmer Glow delivers a high-shine golden bronze finish, while Holo Top — a dazzling yellow-gold shimmer with greenish undertones — adds extreme dimension and a radiant focal point to any eye look.

PRIME BASE

EYESHADOW PRIMER

THE ESSENTIAL PRIMER FOR LONG-LASTING AND INTENSE EYE MAKEUP

An ideal eyeshadow base that keeps your eye makeup in place from morning to night. Its slightly tacky texture helps improve the longevity and adherence of eyeshadows. Enhances color intensity — making shimmers more radiant and mattes more vivid.

Available in two shades:

- 01 – a natural, skin-toned base that evens out the eyelid for a smooth canvas.
- 02 – a brown, slightly shimmery shade perfect as a base for smoky-toned looks or even worn on its own.



VEGAN

MAKEUP ADVICE

If you want a fresh, youthful look, use it on its own, as its tone-evening effect provides a homogeneous appearance. Blend it over the entire eyelid with our Concealer 01 or Concealer 02 brush using light tapping motions, then set it with our Satin Set loose powder for a long-lasting effect.

ABSOLUTE LINER

EYELINER GEL

LONG-LASTING, SMUDGE-PROOF GEL EYELINER

- Thanks to its light, gel-like texture, you can easily create sophisticated or even dramatic lines like a pro.
- Its intense pigmentation ensures perfect coverage with just one brush stroke.
- Luxoya eyeliner gel dries quickly and is waterproof and smudge-resistant, so it lasts all day.

VEGAN



BLACK

BROWN

MAKEUP ADVICE

You can also use the eyeliner gel for lash thickening. Apply a small amount of gel at the roots of the lashes using the Liner 01 brush, then blend it out before it dries with the Smudger 01 brush. For a perfect eyeliner line, fill the Liner 01 brush with product, lay the body of the brush along the desired curve, and draw the line.

ULTRA LINER

INK EYELINER PEN

INTENSELY PIGMENTED, PRECISION FELT-TIP EYELINER

Professional results, effortless application! The Luxoya felt-tip eyeliner features a flexible synthetic brush tip for ultra-precise lines — perfect for both beginners and experienced users.

- The flexible brush allows you to easily create both thin and bold lines — from a classic cat-eye to dramatic looks.
- Intensely pigmented and fast-drying for smooth, skip-free strokes.
- The felt-tip applicator offers exceptional control, making it ideal even for beginners.
- Long-wearing, smudge-proof formula stays in place all day — no fading, no smudging.
- Waterproof eyeliner that withstands heat, humidity, and even a few tears.



TRUE BLACK

DEEP BROWN

0,5 ml

VEGAN

MAKEUP ADVICE

For filling in, use the belly of the tip; for more precise lines, use the tip itself.

SPLENDID LASHES

MASCARA

LENGTHENING AND VOLUMIZING MASCARA IN ONE STEP

- An essential tool for perfectly shaped lashes.
- Its intense black color and dense, finely toothed silicone brush lengthen and volumize lashes from root to tip without clumping or weighing them down.
- Easy and precise application with instant effect.
- Intense black shade.
- Buildable formula allows for layering to enhance dramatic effect without clumping.
- Flexible silicone brush easily follows the natural curve of the eye.
- Shorter silicone teeth at the tip of the brush perfectly reach shorter lashes, accentuating them effortlessly.



WATERPROOF

SPLENDID LASHES mascara 10 ml
SPLENDID LASHES waterproof mascara 10 ml

MAKEUP ADVICE

If you accidentally smudge the mascara on your skin, wait a few minutes until it's completely dry, then gently brush off the unwanted area using the spoolie end of the Eyebrow 01 brush.

BROW FIX

BROW GEL

**FIXING, SHAPING BROW GEL
THAT LASTS ALL DAY**

- The perfect, precisely shaped eyebrow is now achievable for everyone.
- Invisibly sets and tames eyebrow hairs, keeping them in place all day long.
- Its transparent gel formula allows easy shaping of any eyebrow color and density.
- Ideal for creating the trendy laminated brow effect.
- Does not leave a white residue after drying.



30 ml

VEGAN

MAKEUP ADVICE

For shaping your eyebrows, use the Eyebrow 01 brush. Apply a small amount of eyebrow gel onto the brush head and distribute it evenly across the entire eyebrow with upward strokes, moving from the inner to the outer edge. If you want to achieve a laminated brow effect, it's best to start your makeup routine by shaping the eyebrows before applying foundation. Use the Eyebrow 01 brush to apply the gel to the brows with upward, combing motions, then smooth the hairs upwards using the handle of the brush.

BROW DEFINE

**VERSATILE EYEBROW PENCIL FOR
NATURAL AND DEFINED BROWS**

Luxoya Brow Define – The Perfect Eyebrow Tool in One. Luxoya Brow Define eyebrow pencil has everything you need for natural and precise eyebrows.

- The automatic, angled pencil tip allows you to effortlessly draw fine, hair-like strokes or fully fill in your brows.
- The spoolie brush on the other end helps shape and blend your brows for a soft, natural finish.
- Available in three harmonious, natural shades to perfectly match every hair color and skin tone.



01

02

03

0,24 g

NEW!

VEGAN

MAKEUP ADVICE

For filling and shading, use the pencil flat against the skin. To draw thin hair-like strokes, use the angled tip of the pencil with small, precise movements.

COSMETIC BAGS

PRACTICAL AND STYLISH BLACK FAUX LEATHER FOLDABLE COSMETIC BAG 01

Size: 20 cm x 10 cm x 6 cm

NEW!



COMPACT AND STYLISH BLACK FAUX LEATHER MAKEUP BAG 02

Size: 20 cm x 10 cm x 6 cm

NEW!



MAKEUP MIRRORS

GLAM MIRROR

UNIQUE AND STYLISH
COMPACT MIRROR WITH LED LIGHTING
Diameter: 8,5 cm

NEW!



NEW!

HAND MIRROR

ELEGANT AND PRACTICAL
LARGER-SIZED HANDHELD MIRROR
Diameter: 13,5 cm



NEW!

LUXOYA POCKET MIRROR

STYLISH AND COMPACT POCKET MIRROR
Diameter: 6 cm



TWIST

BRUSH HOLDER

PRACTICAL, ROTATABLE MAKEUP BRUSH HOLDER

ROTATING MAKEUP BRUSH HOLDER & ORGANIZER
Stylish 7-compartment design, perfect for storing and organizing your makeup brushes.

- Rotating base allows for easy access – ideal even for small spaces.
- Functions as both a brush holder and organizer.
- Comes with a removable transparent cover to protect your brushes from dust and moisture.



PURE CLEANSE

MAKEUP REMOVER LIQUID

TWO-PHASE MAKEUP REMOVER

A two-phase makeup remover liquid that effortlessly removes even the most long-lasting makeup. Free from dyes and fragrances, it gently cleanses the skin of makeup and impurities.

250 ml

VEGAN



BRUSHES

FOUNDATION 01

A special, hand-shaped, extremely soft, high-density foundation brush made from synthetic fibers that adapts well to the contours of the face, providing a flawless finish. Use flat, gentle tapping motions to blend foundation evenly onto the skin. Its water-repellent properties prevent it from absorbing the product.

VEGAN



FOUNDATION 02

Specially handcrafted foundation brush made from synthetic fibers, extremely soft and densely packed. It adapts well to the contours of the face, ensuring perfect blending. Thanks to its density, it provides a fuller coverage during foundation application. Use flat, gentle tapping motions to evenly blend the foundation on the skin.

VEGAN



MULTI-POWDER 01

A special, hand-shaped, extremely soft multifunctional brush with a full, rounded tip, made of synthetic fibers for powder products. It's the perfect tool for applying loose powder, bronzer, and blush. Use quick tapping motions or slow sweeping strokes on the T-zone, cheekbones, forehead, and along the jawline or neck.

VEGAN



BLUSH 01

A special, hand-shaped, soft, high-density blush brush made from synthetic fibers. Use it to apply blush on the apples of your cheeks, and it's also great for sculpting the face.

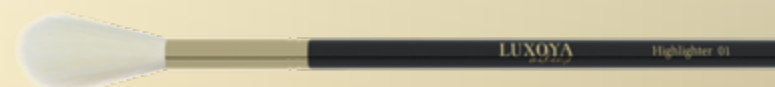
VEGAN



HIGHLIGHTER 01

A special, hand-shaped cone-shaped brush made from synthetic fibers, perfect for highlighting. Apply the highlighter to the higher points of the face using gentle blending motions. It is also excellent for powdering hard-to-reach, smaller areas such as the under-eye region and T-zone.

VEGAN



BRUSHES

CONCEALER 01

A special, hand-shaped, flat, flexible concealer brush made from synthetic fur. Its pointed tip, when dipped in concealer, helps achieve precise shapes for eye makeup and plays a crucial role in defining contours. It is an essential tool for sharpening eyebrows, lips, and eyeliner, and is also excellent for applying and blending Prime Base Eyeshadow Primer.

VEGAN



CONCEALER 02

A special, hand-shaped, soft, high-density synthetic concealer brush. Its unique finger-shaped design makes it easy to apply concealer in the under-eye area or anywhere on the face without getting product on your hands. It's also suitable for covering skin imperfections, as its dense bristles provide a high-coverage finish. It is perfectly designed for applying the Prime Shadow Eyeshadow Primer as well.

VEGAN



BLENDING 01

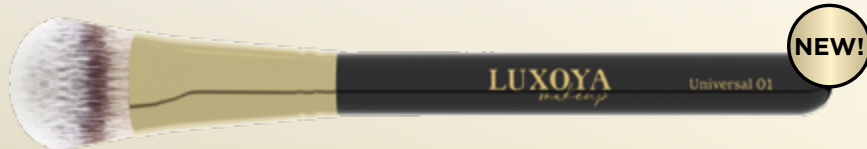
Special hand-shaped soft satin eye brush made of natural hair. A basic accessory for blending. The perfect companion for Enhance palett shades. Use in the outer corner of the eye and on the deepening line with a circular motion.



UNIVERSAL 01

Specially handcrafted brush with a smaller head, made from synthetic fibers, extremely soft with medium density. It adapts well to the contours of the face, ensuring perfect blending whether you use cream, liquid, or powder products. Use flat, gentle tapping motions for application.

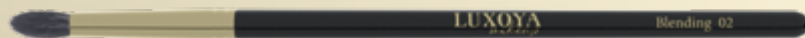
VEGAN



BLENDING 02

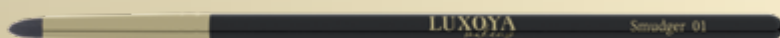
A medium-sized, narrow, hand-shaped eye brush for blending, made of soft synthetic hair. Its special cut allows it to fit perfectly into the deep lines of your eyes, and it satinizes during application thanks to its shorter side strands. For a spectacular deepening effect, use it with our Smoke Palette.

VEGAN



SMUDGER 01

A special hand-shaped pencil-like brush with a precision tip made of natural hair. It is highly recommended for applying the Smoke shade, offering a fine satin finish and enhancing deeper colors.



BRUSHES

LINER 01

A special, hand-shaped precision eyeliner brush made from synthetic fibers. Its flexibility and length offer maximum control for creating precise lines.

VEGAN



PACKER 01 • SZÍNFELVIVŐ 01

A special, hand-shaped, soft color application eye brush made of natural hair. Thanks to its denser bristles, applying pressed chromes is no longer a challenge. Specifically developed for our Magic Top and Shimmer Glow shades, it is also perfect for applying Prime Matte Eyeshadow in the inner corners of the eyes. Use it with dabbing and blending motions.



SHADER 01

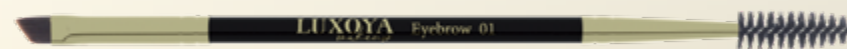
A special, hand-shaped, soft, dense flat eye brush made of natural hair. Use it with patting and stroking movements. It creates a contoured effect, requiring more precision.



EYEBROW 01

A double-sided eyebrow brush that is an absolute must for perfect brow shaping. One side can be used for brow lamination and to achieve a more natural eyebrow shape, helping to tidy up messy strands. The cut-end, slanted flat brush head is best suited for the threading technique on brows and is also perfect for applying eyeshadow.

VEGAN



EYEBROW 02

A two-part eyebrow brush, essential for perfect eyebrow shaping and achieving the laminated look. The flat silicone brush with dense teeth is used for grooming and smoothing the eyebrows, as well as fixing stray hairs. The metal flat spatula part is indispensable for eyebrow lamination, as it is used to press the brows in the direction of hair growth against the skin.

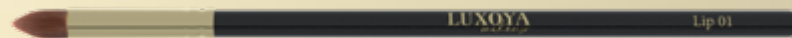
VEGAN



LIP 01

A special, hand-shaped brush made of synthetic hair that easily adapts to the shape of the lips. With a sharp end that forms a wedge effortlessly, it reaches even the inner corners of the lips. Its flat, solid shape allows for even color application.

VEGAN



LUXOYA *makeup*



2025 Copyright - All rights reserved, Luxoya Professional Paris